



TAKE A DIFFERENT ROAD

THE NEW  
**OUTLANDER**



## TWO FACES, ONE CAR

You crave adventure: the joy of an open road, the lure of empty track. You acknowledge responsibility: the frequent, sometimes tedious need to transport a number of people and varying amounts of kit from point A to point B as safely as possible. But with the new Outlander the demands of an active family no longer mean that you can't have fun on

wheels. "Practical, comfortable, attractive and good to drive", the highly-respected motoring independent, Parkers, rates it just half a star from perfect. And, unlike many of its kind, it doesn't just look the part - this SUV is also accomplished off-road.





## GREEN MACHINE

In an Outlander you can have your fun with a clear conscience, for this is one SUV which doesn't ride roughshod over your respect for the planet. It's a car which will seat seven on the school run yet its footprint is smaller than that of most family estates. It operates in two-wheel drive in normal road

conditions so its average fuel consumption is on a par with an ordinary family saloon, and its emission levels are in the lowest VED band of any seven-seater SUV. It provides all the big-car protection you are looking for, but it has been designed to do so in such a way as to minimize injury



to pedestrians or damage to vehicles lighter than itself. In fact, it's so lean, green and responsible that even The Independent newspaper agrees that the Outlander is "the acceptable face of SUV-ism".



## NATURALLY IT'S THE BEST-LOOKING SUV

The Outlander is neither a butch off-roader nor a jacked-up estate; it's an SUV with attitude. Quintessentially Japanese, its handsome lines are clean and clear of gimmicks, making it one of the best looking cars of its kind. From the front it is chunky and purposeful, clearly inspired by the 2002 Pajero Evolution concept car. From the side the combination of a rising waistline, downward sloping roof whose curves are echoed in the rear spoiler, and slash-back

rear windows give an illusion of perpetual forward motion. From the rear its solid stance is softened by wrap-around lights and tailgate glass, a distinctive design unhampered by an external spare wheel. The Outlander has no need for window-dressing for it has nothing to prove – with seventy years expertise in manufacturing 4x4 vehicles Mitsubishi are simply doing what comes naturally.



#### SIGNATURE STYLE

Dynamic and athletic the Outlander's bold, signature 'Mount Fuji' grille is flanked by piercing headlamps – a clear visual link with Mitsubishi's stable of 4x4s, the Shogun and the L200 pick up.





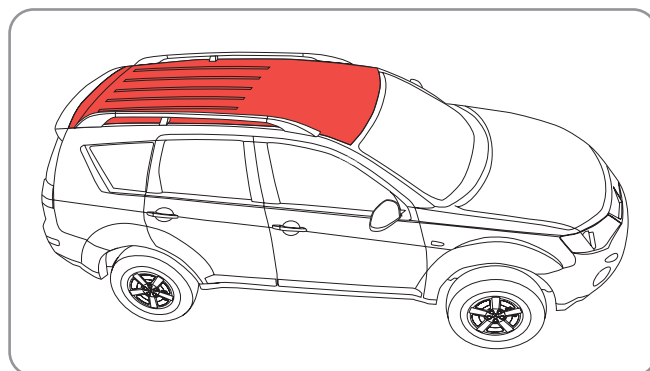
## AN ATHLETE ON ASPHALT

The Independent newspaper really likes the Outlander: "agile, natural and car-like"; Auto Express magazine agrees: "a compact SUV that's not only good to drive, but should prove great to live with". You'll like it, too, for on the road the Outlander is far more of an athlete than you can reasonably expect from any SUV – after all the high ground clearance and raised seating position of a 4x4 are not normally conducive to a sporty drive. But Mitsubishi's

aim was to lower the centre of gravity (thus reducing body roll) and enhance the steering response without resorting to stiffer suspension, since this rarely makes for a comfortable ride. One solution was a lightweight aluminium roof, which is three times more effective in lowering the centre of gravity than utilising lightweight materials for any other body part – a trick borrowed from that supreme master of precision handling, the Mitsubishi Lancer Evolution.



A taut body, wide tracks and chassis specifically designed for sporty handling also play a significant part in the Outlander's fine driving, as does the positive, well-weighted steering, engineered specifically for Europe where drivers demand greater feedback. And to cap it all the Outlander's braking and four-wheel independent suspension systems have been tried and tested in the Lancer Evolution, so it will come as no surprise to learn that the former provide impressive bite and good, progressive pedal feel whilst the latter has been tuned for a smoother, more forgiving ride.





## A NEW IMAGE OF DIESEL POWER

The Outlander is driven by a punchy 2.0 litre, 16v, direct injection diesel engine with a variable geometry turbo charger and an advanced fuel injection system with unit injectors. These work at the highest operating pressures for higher power and torque values with lower emissions and fuel consumption, hence the Outlander's impressive average

in excess of 40 mpg for all models. Maximum torque is achieved at just 1750 rpm and the engine pulls really strongly throughout the rev range through a precise six-speed manual transmission. The result is a sprightly 0-62 mph dash in 10.8 seconds for effortless overtaking and a top speed of 116 mph where allowed.



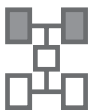


## ROUGH TALK

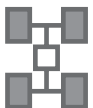
Although no heavy-duty off-roader like the Shogun, the Outlander is actually extremely competent in the rough. So when you really, really want to get away from it all, you can with confidence. The Outlander is designed to operate in front-wheel drive for everyday driving, but it also offers two selectable, electronically controlled four-wheel drive modes depending upon the terrain and weather conditions. Both modes provide four-wheel drive 'on demand', which means that the Outlander calculates the optimum amount of torque to be transferred to the rear axle and adjusts accordingly – the more traction required the greater the percentage of torque which goes to the rear. So when you're accelerating away more power will be sent to the rear wheels than when you're cruising steadily, and the more conditions deteriorate the more torque is transferred to the rear.

But a good four-wheel drive car should not rely solely on its drivetrain. Mitsubishi's expertise gained from competing in, and winning, the world's most gruelling cross-country rallies has led to the development of All Wheel Control technology, an integrated approach to handling, traction and stability where the Outlander's drivetrain, ABS and stability and traction control systems communicate for optimum performance.



**2WD MODE**

Front wheel drive provides the best fuel consumption and should be selected for everyday driving on dry paved roads.

**4WD MODE**

Automatically shifts torque between the front and rear axles varying the front:rear ratio up to 70:30 depending upon the need.

**4WD LOCK MODE**

This mode should be used in extreme weather and on more challenging terrain since some torque is always sent to the rear wheels, the proportion varying up to a maximum 50:50 front:rear split.



## A COOL CABIN IN EVERY SENSE

Echoing the sporty theme which runs throughout its design the Outlander's cockpit is unmistakably twenty-first century. Sophisticated black relieved by two shades of silver provides the colour scheme and it feels as cool as it looks thanks to solar-control glass which reduces transmission of the sun's heat by up to 100%. The sporty, tilt-adjustable steering wheel features remote controls for the audio and the cruise control where fitted. The air conditioning is climate controlled throughout the range, the windows are electric and the door mirrors both electric and heated for clear vision on damp mornings. Depending upon the model, specifications also include a Bluetooth hands-free kit, 30-gigabyte hard drive satellite navigation and a 650w, 9-speaker audio system. In fact, even the roof is special, lined with a fabric which absorbs odours it's goodbye and good riddance to unsavoury smells.





### LOOKING GOOD AND CLEVER, TOO

Flanked by sunglasses-style dials the multi-information display provides a wealth of data. In addition to the usual water temperature and seatbelt reminders the Outlander will also give you fuel consumption and average speed, tell you how far you can go before you fill up with fuel and how long until your next service, both in time and distance.



**Rockford Fosgate**



## A SUPERIOR SOUND SYSTEM

The Outlander Elegance boasts a premium 8-channel, 650w audio system designed by Rockford Acoustic Design™ for really superior sound. A digital signal processor enables you to create the optimum acoustic characteristics to match your sound source and personal preference, choosing from four acoustic fields – normal, stage, live and hall – and five sound types – classic, jazz, pop,

rock and hip-hop. A total of 9 speakers, including a 25cm dual voice coil subwoofer, are housed in seven locations, and the doors are specially stiffened to avoid vibration and packed with sound absorbing material to turn them into huge speaker boxes. The system is also speed-sensitive, compensating its volume automatically for road and wind noise.

### SATELLITE NAVIGATION AND MORE

The 30-gigabyte, hard disk drive satellite navigation system with colour, touch-screen display is particularly quick and particularly intelligent, with ultra-fast search and route finding capabilities. The head unit delivers in-car entertainment with an AM/FM receiver, MP3 compatibility and a DVD player which supports CD, CD-R, CD-RW and DVD-video formats. It also includes a CDDB (CD Database) which relays information about the CD being played to the screen and a hard disk-driven music catcher which can download and store up to 2000 music tracks.





## QUICK CHANGE ARTIST

The Outlander is a real SUV so expect to enjoy a panoramic view, but not at the expense of easy access – the semi-bucket front seats are set at hip height to make sliding in and out a simple matter; the further back you sit the higher the squab cushions so that all passengers enjoy a real sense of space.

First and second row seats are covered in a non-slip suede knit fabric with mesh fabric providing better air circulation on the side and thigh bolsters. Leather for front and second row seats is available on the Warrior and standard on the Elegance. But one of the Outlander's most appealing aspects is its incredible versatility – providing up to seven seats for the school run on all but the base model. This third row features Mitsubishi's clever Hide & Seat system so they can

be folded flat into the floor in seconds. But equally as clever are the second row seats, which can recline for comfort, slide backwards and forwards for practicality, split 60:40 and fold-and-tumble forward in a one-step operation at the touch of a button. Even the front row can recline fully to make up a spacious and comfortable bed.

Indeed, comfort and attention to detail are an Outlander hallmark with numerous bottle holders, cup holders, trays and compartments for storage and the glove compartment uses air from the air conditioning to stay cool in the summer and warm (if wanted) in winter. A further cup holder extends from out of the dash.



## SPACE CRAFT

Cargo space in the Outlander is little short of amazing. With all five seats in place it provides between 771 and 882 litres (remember those sliding seats mean that you can benefit passengers or parcels at will), and with the second row flipped forwards this increases to a cavernous 1691 litres – big enough to swallow a couple of mountain

bikes whole. But it's not simply the amount of space which is important, but the way in which you access it. Loading heavy items over a sill is never easy so the Outlander boasts a split tailgate, the lower section of which opens flat at just 600mm from the floor for really easy access.



### LIGHT WORK

With a split tailgate design the regularly used top section is lighter and more compact, allowing access to the rear of the vehicle even in more confined spaces.



### SEATING PLAN

When lowered the bottom section of the tailgate takes loads up to 200 kg and so provides a very handy seat.



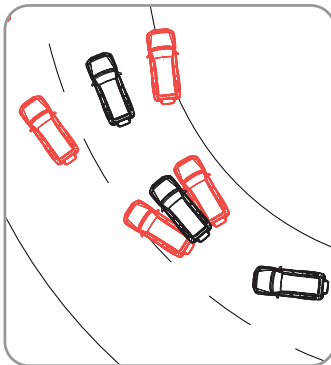


## SAFE, BUT NOT AT THE EXPENSE OF OTHERS

The Outlander was designed and engineered to meet the most stringent safety requirements whilst improving pedestrian protection, minimizing damage to lighter vehicles and reducing repair costs in event of low-speed impacts – a tall order met by a variety of new structural measures. Firstly, a high proportion of high-tensile steel was used to increase body strength whilst keeping the weight down. Energy absorption was optimized with a reinforced girdle body construction and unusually-shaped front side members, whilst a triple-leg bearing structure which links these with the dash cross centre and lower members is so effective in dispersing impact-energy that Outlander occupants are protected whilst damage to a smaller car is reduced. The front section of the side members also has a crush box structure which prevents crash

energy from being transmitted down the full length of the vehicle in a low-speed collision, reducing body damage and, consequently, repair costs. Finally, crumple zones separating the body from solid internal structures like the engine, together with bumpers made from a special energy-absorbing polyurethane foam help to protect pedestrians.

Other passive safety measures include a cross frame under the front seat squabs to restrict forward movement, an energy-absorbing floor pad and footrest and seats designed to reduce whiplash in the event of a rear shunt. Of course, all seats, including the occasional third row ones, are fitted with 3-point seatbelts and front seatbelts are fitted with pretensioners.



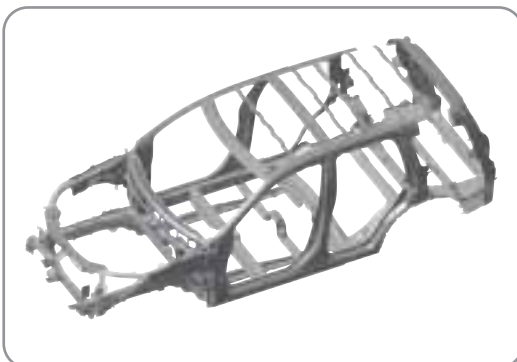
**M-ASTC**

Mitsubishi's Active Stability and Traction Control operates in both two- and four-wheel drive and plays an active roll in the Outlander's safety by improving handling on slippery surfaces. Onboard sensors identify and correct oversteer and understeer to ensure improved stability and grip.



**AIRBAGS**

The Outlander Equippe is fitted with dual front SRS airbags whilst both Warrior and Elegance models provide maximum protection with the addition of side and curtain airbags. Of course, the Outlander's impact energy absorbing rib construction in the pillars and roof panel also helps to reduce head injuries.



**PROTECTIVE RIBS**

Regardless of the direction of impact a reinforced girdle of energy impact-absorbing 'ribs' play a major part in the Outlander's outstanding passive safety measures.

## ACCESSORIES

Economical, versatile and a pleasure to drive, the Outlander is an exceptional everyday vehicle which is also more than capable of taking you on some off-road adventures. Specifications are high but there are always ways to personalise your vehicle – to make it fit your own particular needs more precisely. To that end there are more than 80 approved accessories available for

the Outlander, all of which benefit from the same excellent warranty as the vehicle itself if fitted when new.

Channel4.com call the Outlander “an excellent all-rounder”. Before you make your decision take a look at the Outlander Accessories brochure and make sure that you make the most of it.



1. Upper and lower sports grille and fog lamp styling elements
2. Side air dam with polished stainless steel inlay, side protection moulding (both painted in body colour) and chromed mirror covers
3. Rear bumper protection plate
4. Wet bag
5. Rear parking assistance
6. Front side window deflector
7. Rear skid plate
8. Rimfire 16" alloy wheel (Equippe)

This is only the beginning of the personalisation adventure. For more accessories available, please see the Accessories brochure.



OUTLANDER

## EQUIPPE



### Key features

- Alarm system and keyless entry
- FM/AM Radio and CD/MP3 player
- Front dual airbags
- Mitsubishi Active Stability and Traction Control (M-ASTC)
- ABS with EBD
- Climate control air conditioning
- Central locking including tailgate
- Electric heated door mirrors
- Front and rear electric windows
- 16" steel wheels
- Rear spoiler with LED stop lamp
- Colour keyed bumpers
- Colour keyed door mirrors
- Tonneau cover
- 12 volt accessory sockets
- Height adjustable driver seat
- One-touch folding rear seats



## WARRIOR



### Key features

#### SPECIFICATION AS EQUIPPE PLUS:

- Side and curtain airbags
- Front resin guard
- Chrome door mirrors, handles and headlamp bezels
- 18" alloy wheels
- Privacy glass
- Hide & Seat 3rd row seats
- Bluetooth hands free kit
- Silver roof rails
- Cruise control
- Front fog lamps
- Leather steering wheel with remote controls
- Leather shift knob
- Side door garnish silver
- Black leather seats – front and 2nd row (optional)



## ELEGANCE



### Key features

#### SPECIFICATION AS WARRIOR PLUS:

- Leather faced seats (front and 2nd row)
- Heated front seats with powered driver's seat
- HDD satellite navigation system
- Electric sunroof
- Chrome door entry guards
- Colour-keyed door mirrors and handles

- Rockford Acoustic Design™ 650w audio system
- Front bumper under panel, silver

#### DELETED FROM WARRIOR SPEC:

- Front resin guard
- Chrome door mirrors, handles and headlamp bezels
- Privacy glass



## 4WORK COMMERCIAL

### Key features

- Alarm system and keyless entry
- FM/AM Radio and CD/MP3 player
- Front dual airbags
- ABS with EBD
- Climate control air conditioning
- Central locking including tailgate
- Electric heated door mirrors

- Front electric windows
- 16" steel wheels
- Rear spoiler with LED stop lamp
- Colour keyed bumpers
- Colour keyed door mirrors
- 12 volt accessory sockets
- Height adjustable driver seat



For further information on the Outlander 4Work, please ask your local dealer for the 4Work brochure/price list.



1. Roof rails (Warrior/Elegance)
2. Floor console box with slide-adjustable centre armrest
3. Cooled glove box
4. Silver side door garnish (Warrior/Elegance)
5. Chrome front entry garnish (Elegance)
6. Steering wheel with remote control switches (Warrior/Elegance)
7. HDD navigation system with music server and Rockford Acoustic Design™ premium audio system (Elegance)
8. CD/MP3 audio system (Equippe/Warrior)
9. Anti-trapping electronically controlled sunroof with sunshade (tilt and sliding) (Elegance)
10. 18" Alloy wheel (Warrior/Elegance)

# TECHNICAL SPECIFICATIONS

Model		2.0 DI-D Equippe Manual	2.0 DI-D Warrior Manual	2.0 DI-D Elegance Manual
<b>Engine</b>		In-line 4-cylinder 16-valve DOHC diesel engine, turbocharger with intercooler		
Engine type		Electronically controlled unit injector direct injection		
Fuel system		Electronically controlled unit injector direct injection		
Displacement	cc	1968	1968	1968
Bore x stroke	mm	81.0 x 95.5	81.0 x 95.5	81.0 x 95.5
Compression ratio		18.0:1	18.0:1	18.0:1
Max. output	kw (bhp) at rpm	103 (138)/4000	103 (138)/4000	103 (138)/4000
Max. torque	Nm (lb.ft) at rpm	310 (228)/1750	310 (228)/1750	310 (228)/1750
<b>Performance/Fuel Consumption/Emissions</b>				
Maximum speed	mph (kph)	116 (187)	116 (187)	116 (187)
Acceleration 0-62 mph	secs	10.8	10.8	10.8
Fuel type		Diesel	Diesel	Diesel
Fuel consumption	Urban	8.4 (33.6)	8.8 (32.1)	8.8 (32.1)
lts/100km (mpg)	Extra urban mode	5.5 (51.4)	5.9 (47.9)	5.9 (47.9)
	Combined mode	6.6 (42.8)	6.9 (40.9)	6.9 (40.9)
CO <sub>2</sub> emissions	g/km	174	183	183
Emissions compliance		EU-4	EU-4	EU-4
<b>Suspension and Steering</b>		MacPherson strut, coil springs, telescopic shock absorbers, stabiliser bar		
Front axle		Trailing arm multi-link, coil springs, telescopic shock absorbers, stabiliser bar		
Rear axle		Anti-lock Braking System with Electronic Brakeforce Distribution (ABS + EBD)		
Brakes		294mm (11.6") ventilated disc (2-pot)		
	Front	302mm (11.9") disc with internal drum handbrake		
	Rear	Rack and pinion, power-assisted		
Steering		Rack and pinion, power-assisted		
Min. turning circle	m (ft)	10.6 (34.8)	10.6 (34.8)	10.6 (34.8)
Tyres		215/70R16 100H	225/55R18 98V	225/55R18 98V
Wheels		16 x 6.5JJ steel	18 x 7.0JJ alloy	18 x 7.0JJ alloy
<b>Driveline/Transmission</b>		On-demand 4WD system with mode selector and electronic control coupling.		
Type		Mitsubishi Active Stability & Traction Control		
Clutch	Manual	Hydraulic action	Hydraulic action	Hydraulic action
Transmission	Manual	6-speed	6-speed	6-speed
Gear ratios	1st	3.818	3.818	3.818
	2nd	2.045	2.045	2.045
	3rd	1.366	1.366	1.366
	4th	0.974	0.974	0.974
	5th	0.897	0.897	0.897
	6th	0.790	0.790	0.790
	Reverse	4.139	4.139	4.139
Final gear ratio	1st-4th	4.058	4.058	4.058
	5th-6th, Reverse	3.450	3.450	3.450
<b>Dimensions</b>				
Cargo room l x w x h, max.	mm	1650 x 1335 x 930	1650 x 1335 x 930	1650 x 1335 x 930
Exterior l x w x h	mm	4640 x 1800 x 1680	4640 x 1800 x 1720	4640 x 1800 x 1720
Ground clearance (unladen)	mm	205	178	178
Track Front	mm	1540	1540	1540
Rear	mm	1540	1540	1540
Wheelbase	mm	2670	2670	2670
Approach angle	degrees	22.0	22.0	22.0
Departure angle	degrees	21.0	21.0	21.0
Ramp breakover	degrees	19.0	19.0	19.0
<b>Weights/Volumes</b>				
Seating capacity		5	7	7
Fuel tank capacity	lts (imp.galls)	60 (13.2)	60 (13.2)	60 (13.2)
Cargo capacity min.	lts VDA (cu.ft.)	771 (27.2)	220 (7.8)	220 (7.8)
max.	lts VDA (cu.ft.)	1691 (59.6)	1691 (59.6)	1691 (59.6)
Gross vehicle weight	kg (lbs)	2360 (5203)	2360 (5203)	2360 (5203)
Kerb weight	kg (lbs)	1655 (3649)	1690 (3726)	1690 (3726)
Towing capacity Braked	kg (lbs)	2000 (4409)	2000 (4409)	2000 (4409)
Unbraked	kg (lbs)	570 (1257)	570 (1257)	570 (1257)
Trailer nose weight	kg (lbs)	100 (220)	100 (220)	100 (220)
Roof loading capacity	kg (lbs)	80 (176)	80 (176)	80 (176)
<b>Servicing/Insurance/Warranty</b>		Every 9000 miles or 12 months, whichever occurs first		
Service intervals		Every 9000 miles or 12 months, whichever occurs first		
Insurance group		10E	11E	12E
Warranty		3 year unlimited mileage warranty, 12 year anti-corrosion perforation warranty, 3 year pan-European roadside, home and accident assistance		

## STANDARD AND OPTIONAL EQUIPMENT

■ : Standard □ : Option at additional cost - : Not available DFO : Dealer Fit Option at additional cost

Model	DI-D Equippe Manual	DI-D Warrior Manual	DI-D Elegance Manual
<b>Security and Safety Features</b>			
<b>Security</b>			
Alarm/keyless entry	■	■	■
Door deadlocks	■	■	■
Immobiliser, engine	■	■	■
Locking wheel nuts	-	■	■
Luggage cover, retractable	■	■	■
Visible VIN	■	■	■
<b>Safety</b>			
ABS with EBD	■	■	■
Airbags SRS, driver's and front passenger's, two-stage inflation	■	■	■
Airbag SRS, front passenger's deactivation switch	■	■	■
Airbags SRS, front seat side and curtain	-	■	■
Child proof rear door locks	■	■	■
Disc brakes, ventilated front, solid rear	■	■	■
Electric sunroof, anti-trapping	-	-	■
Electric windows, anti-trapping, front and rear	■	■	■
High-mount stop lamp, rear	■	■	■
ISO-Fix child seat mountings, 2nd row	■	■	■
Mitsubishi Active Stability & Traction Control (M-ASTC)	■	■	■
Seatbelts, ELR with pretensioners and force limiters, front	■	■	■
Seatbelts, ELR 3-point x 3, 2nd row	■	■	■
Seatbelts, ELR x 2, 3rd row	-	■	■
<b>Exterior features</b>			
<b>Styling</b>			
16" steel wheels with full wheel covers	■	-	-
16" alloy wheels, 5-spoke	□	-	-
18" alloy wheels, 6-spoke	-	■	■
Bumpers, colour keyed (black lower)	■	■	■
Bumper under panel, front, black	■	-	-
Bumper under panel, front, silver	-	-	■
Bumper under panel, rear, black	■	■	■
Door handles, black	■	-	-
Door handles, colour-keyed	-	-	■
Door mirrors, colour keyed	■	-	■
Door mirrors, handles and headlamp bezels, chrome	DFO	■	DFO
Front grille silver trim	■	■	■
Front resin guard, colour-keyed	DFO	■	DFO
Metallic or pearlescent paint finish	□	□	□
Privacy glass, rear side windows and tailgate window	□	■	□
Roof rails, silver	-	■	■
Roof spoiler, colour-keyed	■	■	■
Side door garnish, silver	DFO	■	■
Side sill garnish, black	■	■	■
Spare wheel, space-saver type, under rear floor (external)	■	■	■
<b>Functional</b>			
Automatic lights on/off	■	■	■
Central door locking including tailgate, keyless entry	■	■	■
Door mirrors, electric heated with folding function	■	■	■
Fog lamps, reflector type, front	DFO	■	■
Rear parking sensors	DFO	DFO	DFO
Tailgate, split function	■	■	■
Wipers, variable intermittent with washer, front	■	■	■
Wiper, intermittent with washer, rear	■	■	■
Window demister with timer, rear	■	■	■
<b>Interior features</b>			
<b>Audio/Navigation/Communications</b>			
Aerial, rear roof mounted	■	■	■
Bluetooth hands-free telephone kit	DFO	■	■
HDD 30GB navigation/music server system with 7" touch-screen display	DFO	DFO	■
Standard audio system (radio/CD/MP3 player) with 6 speakers	■	■	-
Premium 650W Rockford Acoustic Design™ audio system with 9 speakers	-	-	■
<b>Styling</b>			
Dashboard air outlet trim, dark silver	■	■	■
Door inner handles, black	■	-	-
Door inner handles, chrome	-	■	■
Door armrests/front inserts and front centre armrest – fabric	■	■	-
Door armrests/front inserts and front centre armrest – leather	-	□	-
Door armrests/front inserts and front centre armrest – leather-look	-	-	■

■ : Standard □ : Option at additional cost - : Not available DFO : Dealer Fit Option at additional cost

Model	DI-D Equippe Manual	DI-D Warrior Manual	DI-D Elegance Manual
<b>Interior features continued</b>			
<b>Styling</b>			
Floor console and door trim panels, black	■	-	-
Floor console and door trim panels, dark silver	-	■	■
Front door entry guards, chrome with Outlander name	-	-	■
Gearshift knob, leather-wrapped	-	■	■
Instrument panel meter trim, silver	■	■	■
Seat trim, fabric	■	■	-
Seat trim, leather, black with Warrior logo (front and 2nd row)	-	□	-
Seat trim, leather faced (front and 2nd row)	-	-	■
Steering wheel, urethane	■	-	-
Steering wheel, leather-wrapped with remote audio/cruise/Bluetooth controls	-	■	■
<b>Convenience</b>			
Air conditioning, climate control with air filter	■	■	■
Coat hanger	■	■	■
Cruise control	DFO	■	■
Cup holder, driver's, in dashboard	■	■	■
Cup holders, front, in floor console	■	■	■
Cup holders, rear, in centre armrest	■	■	■
Cargo room underfloor tray	■	-	-
Cargo room utility bars	-	■	■
Cargo room side storage box	■	■	-
Cargo tie-down hook x 4	■	■	■
Dashboard upper centre storage box with lid	■	■	■
Door pockets, front and rear with bottle holders	■	■	■
Floor console box with slide-adjustable centre armrest and storage boxes	■	■	■
Front seat backrest pockets	■	■	■
Footrest, driver's	■	■	■
Glove box, lower, lockable and illuminated	■	■	■
Glove box, upper, with cooling/warming storage function	■	■	■
Illuminated ignition keyhole	■	■	■
Key-in-ignition reminder	■	■	■
Lights-on warning buzzer	■	■	■
Retractable assist grip x 3	■	-	-
Retractable assist grip x 4	-	■	■
Rear seat heater ducts	■	■	■
Sunglasses pocket	■	■	-
Sunvisors, driver's & passenger's with vanity mirrors and ticket holders	■	■	■
<b>Functional</b>			
Accessory socket x 3	■	■	■
Central door locking switch	■	■	■
Door mirrors, electric heated with folding function	■	■	■
Drive mode selector, floor console	■	■	■
Electric sunroof, glass, tilt/slide	-	-	■
Electric windows with driver's one-touch open/close, front and rear	■	■	■
Fuel lid opener, remote	■	■	■
Headlamp levelling	■	■	■
Instrument panel light dimmer	■	■	■
Multi-information monitor (in instrument panel)	■	■	■
Steering wheel, tilt adjustable	■	■	■
<b>Lighting</b>			
Floor console down lights, LED, red	■	■	■
Interior lamp, front, with map lamps	■	■	■
Interior lamp, centre	■	■	■
Luggage/cargo area lamp	■	■	■
<b>Seats</b>			
Armrest, front - centre with sliding adjustment	■	■	■
Armrest, 2nd row - centre with built-in cup holders	■	■	■
Head restraints, front - height adjustable x 2	■	■	■
Head restraints, 2nd row - height adjustable x 3	■	■	■
Head restraints, 3rd row - folding	-	■	■
Seats, front - driver's height adjuster	■	■	■
Seats, front - driver's 4-way power and 2 x heated seats	-	-	■
Seats, front - sliding/reclining/fully flat folding	■	■	■
Seats, front - seatbelt height adjustment	■	■	■
Seats, 2nd row - 60/40 split-folding/tip-up	■	■	■
Seats, 2nd row - one-touch auto-fold/tumble function	■	■	■
Seats, 2nd row - sliding/reclining/fully flat folding	■	■	■
Seats, 2nd row - ISO-Fix child seat mountings	■	■	■
Seats, 3rd row - fold-away bench type	-	■	■

**COLOUR OPTIONS**



**FLAME RED (S)**



**COOL SILVER (M)**



**AMETHYST BLACK (P)**



**THUNDER BLUE (P)**



**STONE GREY (P)**

- 1 Black/Grey Fabric (Equippe)
- 2 Black Fabric (Warrior)
- 3 Black Leather (Warrior)
- 4 Black Leather (Elegance)
- 5 Beige Leather (Elegance)

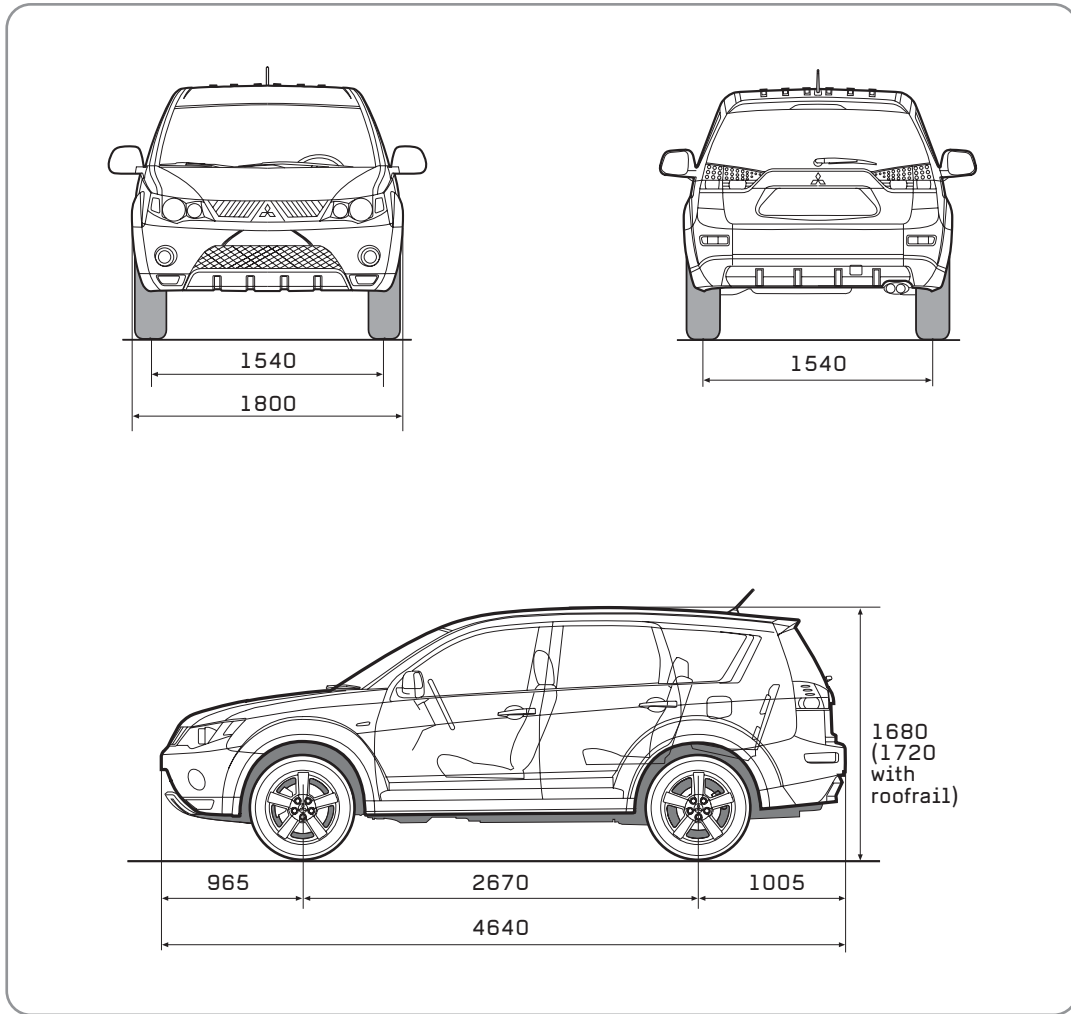


■ : Available    - : Not available    M: Metallic    P: Pearlescent    S: Solid

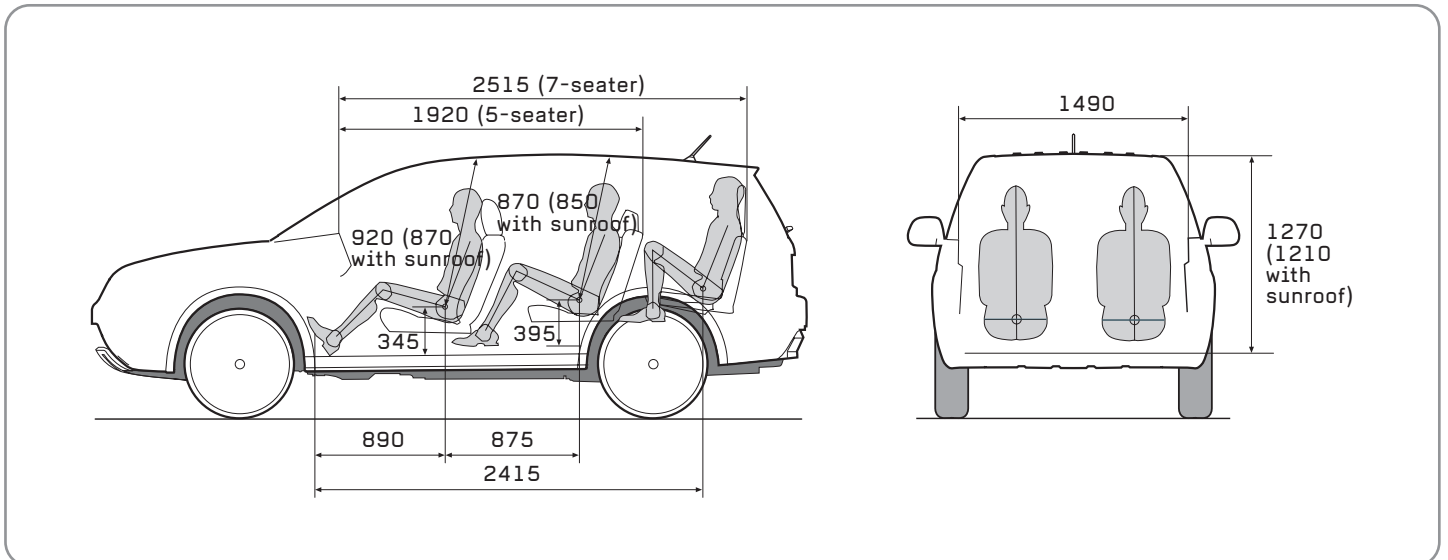
Model	OUTLANDER 2.0 DI-D				
	Equippe	Warrior		Elegance	
<b>Exterior colour</b>					
1 Flame Red (S) P23	■	■		■	-
2 Cool Silver (M) A31	■	■		■	-
3 Amethyst Black (P) X42	■	■		■	-
4 Thunder Blue (P) T65	-	-		-	■
5 Stone Grey (P) A39	■	■		■	-
<b>Seats</b>	Fabric (Black/Grey)	Fabric (Black)	Leather (Black)	Leather-faced (Black)	Leather-faced (Beige)
<b>Door trim</b>	Fabric Armrests with Front Fabric Inserts (Black)	Fabric Armrests with Front Fabric Inserts (Black)	Leather Armrests with Front Leather Inserts (Black)	Leather-look Armrests with Front Leather-look Inserts (Black)	Leather-look Armrests with Front Leather-look Inserts (Beige)
<b>Headlining</b>	Non-woven Fabric (Grey)				Non-woven Fabric (Beige)
<b>Floor carpet</b>	Needle Punch Velour (Black)				

Colours and trims reproduced on these pages may vary from the actual colours due to the limitations of the printing process used.

EXTERIOR DIMENSIONS



INTERIOR DIMENSIONS



## OUTSTANDING AFTER SALES FOR CAREFREE MOTORING

More than 2500 Mitsubishi Motors Authorised Service Points in Europe are committed to helping you wherever you are.



### MITSUBISHI FIXED PRICE SERVICING

With the Mitsubishi Fixed Price Service Plan, you'll have the peace of mind that your Outlander will be serviced regularly by skilled

Mitsubishi trained technicians ensuring your Outlander gets the TLC it deserves.

The Mitsubishi Fixed Price Service Plan provides a number of different term options to suit your needs and pocket guaranteeing you fixed and inflation-proof servicing.

The Plan can be bought with a new vehicle or at any time up to the vehicle's first service. Please ask your local dealer for more details.

### MITSUBISHI MOTORS GENUINE PARTS

Even the smallest technical faults can lead to accidents. Therefore, all Mitsubishi Motors Genuine Parts have been developed and tested to stringent quality standards. We recommend using Mitsubishi Motors Genuine Parts in order to maintain the safety and integrity of your vehicle and that of your passengers. Mitsubishi Motors Genuine Parts are available at all Mitsubishi Authorised Service Points.

### COMPREHENSIVE WARRANTY

All new Mitsubishi Outlander vehicles come with a comprehensive 3-year unlimited mileage warranty as standard. The anti-corrosion perforation warranty covers rusting through for the first 12 years. The reliability statistics for Mitsubishi vehicles are impressive, but in the unlikely event that you do need help, we offer MAP.

## MITSUBISHI MOTORS RECYCLING

We all have a duty to protect the environment. After a long working life we will take back any Mitsubishi Motors vehicle originally sold by The Colt Car Company Ltd. and recycle it in an environmentally friendly manner in accordance with the EU Directive on End-of-Life Vehicles and any applicable national statutory provisions.

All Mitsubishi Motors vehicles sold by The Colt Car Company Ltd. on or after 1st July 2002 will be taken back free of charge from the last owner, at one of the designated take-back points, provided the vehicle contains all major components and is free of waste. From 1st January 2007, this applies to all Mitsubishi Motors vehicles sold by The Colt Car Company Ltd. irrespective of date of sale.

For further information please visit [www.cartakeback.com](http://www.cartakeback.com), email [info@cartakeback.com](mailto:info@cartakeback.com) or call the Cartakeback info-line on 0845 257 32 33.

### MAP - FREE BREAKDOWN ASSISTANCE



Throughout the 3-year warranty period your vehicle is covered by Mitsubishi Motors Assistance Package (MAP) roadside assistance. This cover extends to more than 30 countries throughout Europe so your

mobility is guaranteed. Should you ever need assistance in the event of breakdown, accident, theft or vandalism - wherever you are, 24 hours a day, 7 days a week - just call the number on your card.

If the problem cannot be fixed on the spot, your car will be taken to the nearest Mitsubishi Authorised Service Point and you'll be offered services such as a hotel, continuation of journey or a replacement car. And if you continue to have your vehicle serviced at a Mitsubishi Authorised Service Point after the warranty period, your mobility will be guaranteed for an additional year or up to the next service (whichever comes first), for a nominal fee. This applies to vehicles up to 10 years old.



For information on the UK's widest range of 4x4 commercial vehicles, please ask your local Mitsubishi dealer for the 4Work range brochure/price list.

Specifications and warranty conditions may vary for overseas markets. For personal export, NATO or diplomatic sales, please contact the Diplomatic Sales and Export Manager at The Colt Car Company Ltd., Watermoor, Cirencester, Glos. GL7 1LF. Tel: 01285 655777.

The specification of the vehicles illustrated in this publication may not be applicable to the UK market, furthermore some vehicle illustrations may include accessory items which are not part of UK standard specification. However, every effort has been made to ensure that the written information was accurate, up-to-date and consistent with UK specification at the time of going to press. The right is reserved to change specification, features and prices without prior notice. To avoid any misunderstandings, your Mitsubishi Motors dealer will advise of any alterations made since the date of issue of this brochure. No part of this publication may be reproduced in any form or by any means, without the prior written permission of The Colt Car Company Limited.

Head Office: The Colt Car Company Ltd., Watermoor, Cirencester, Glos. GL7 1LF  
Tel: 01285 655777 Fax: 01285 658026 Website: [www.mitsubishi-cars.co.uk](http://www.mitsubishi-cars.co.uk)

OUTL5007  
07 eng-gb 261501 Feb. 07 Printed in Belgium